



Process Mining

The new “hot stuff” in the process industry

Roland Woldt – December 13, 2021

 **software** AG

With You Today

The hosts of the What's Your Baseline podcast are experienced consultants in the EA and BPM space.

Roland Woldt

Roland is a well-rounded executive with 20+ years of Business / Digital Transformation consulting and software development/system implementation experience, in addition to leadership positions within the German Armed Forces (11 years).

He has worked as a Team Lead, Engagement/ Program Manager, and Enterprise/Solution Architect on many projects. Within these projects, he was responsible for the full project life cycle from shaping a solution and selling it, to setting up a methodological approach through design, implementation, and test, up to the roll-out of solutions.

In addition to this Roland has managed consulting offerings during their life-cycle from the definition, delivery to update, and had revenue responsibility for them. This also included the stand-up and development of consulting teams, and their day-to-day management.

The vast majority of Roland's experiences were leading service groups at Accenture, Software AG, and KPMG. For additional, more detailed information please head over to his personal site at www.woldt.de.



J-M Erlendson

J-M is a Business Process Architect, Methodology Specialist, Conference Speaker, and Transformation Engineering Lead with over 15 years of experience in Business Process Management (BPM), Enterprise Architecture, Supply Chain Management and Project Management, helping clients develop and implement business process frameworks, hone process-centric strategies, and execute process improvement and architecture modernization projects.

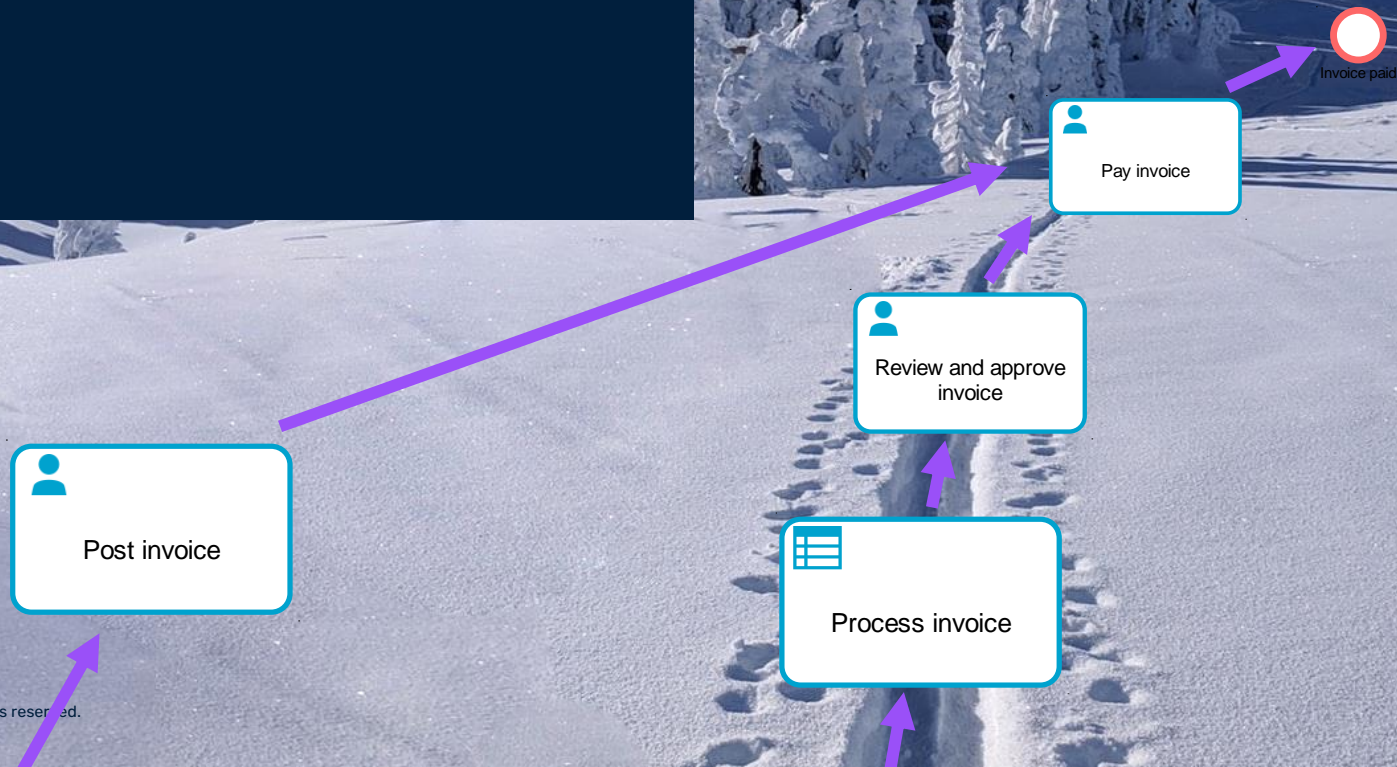
He is a leader in business, founding and running multiple highly-successful independent arts companies and charities. He is a process and EA tools expert and high-level trainer with years of experience in documentation, simulation, analysis, improvement and as a vehicle for change management.

J-M combines this technical skill with strong leadership and relationship management skills, having run multiple BPM and EA-focused projects with cross-functional supporting teams.



Like footprints in the snow...

...executing processes leave process traces in application systems



How Does Process Mining Work?

Data traces representing process executions.

PROCESS EXECUTION

Case ID 4711

(e.g., order number)



Case ID 4712

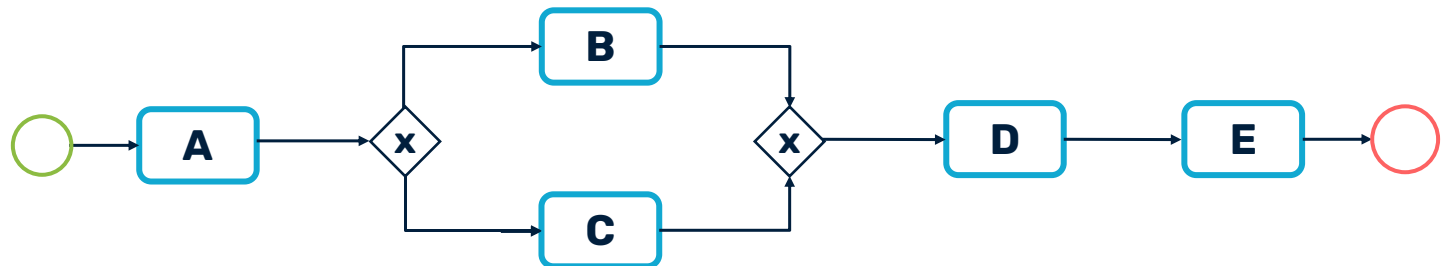
(e.g., order number)



PROCESS TRACES AND DATA STRUCTURE

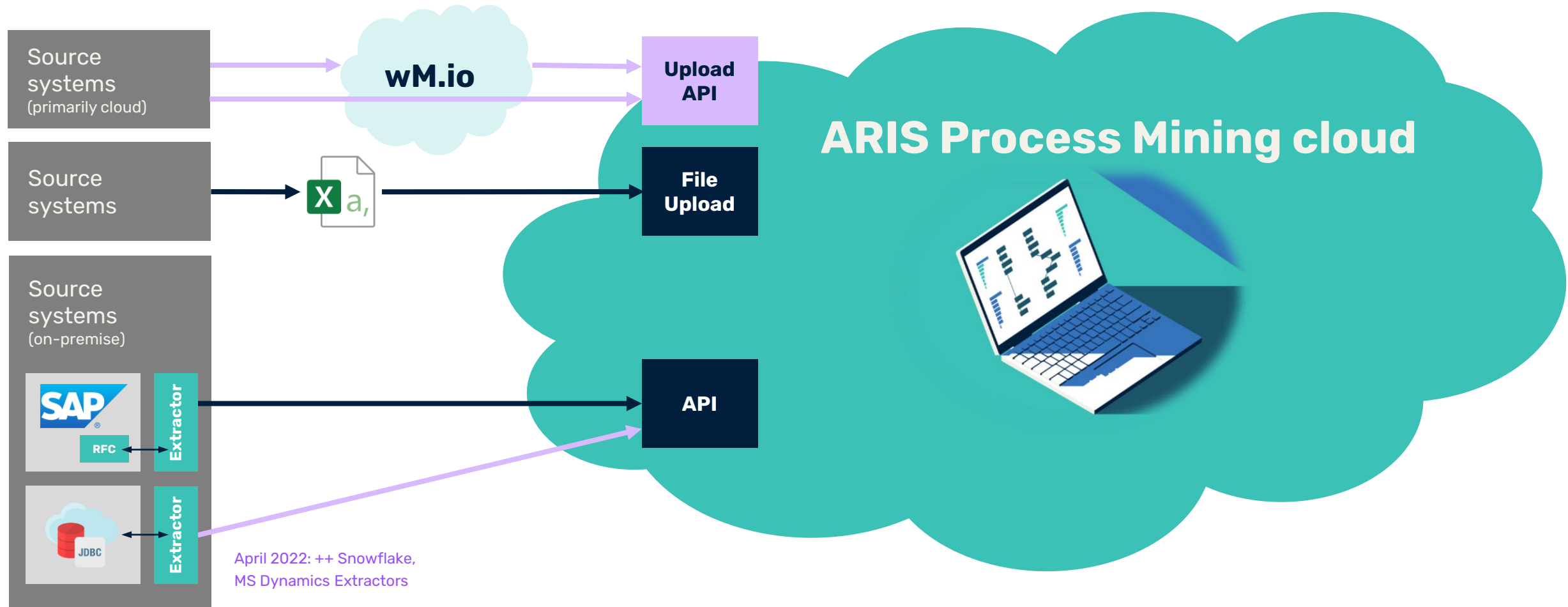
CASE ID	ACTIVITY NAME	ACTIVITY TIMESTAMP
4711	A	Jan 1, 2020
4711	B	Jan 2, 2020
4711	D	Jan 3, 2020
...
4712	A	Jan 4, 2020
4712	C	Jan 5, 2020
4712	D	Jan 6, 2020
...

PROCESS DISCOVERY



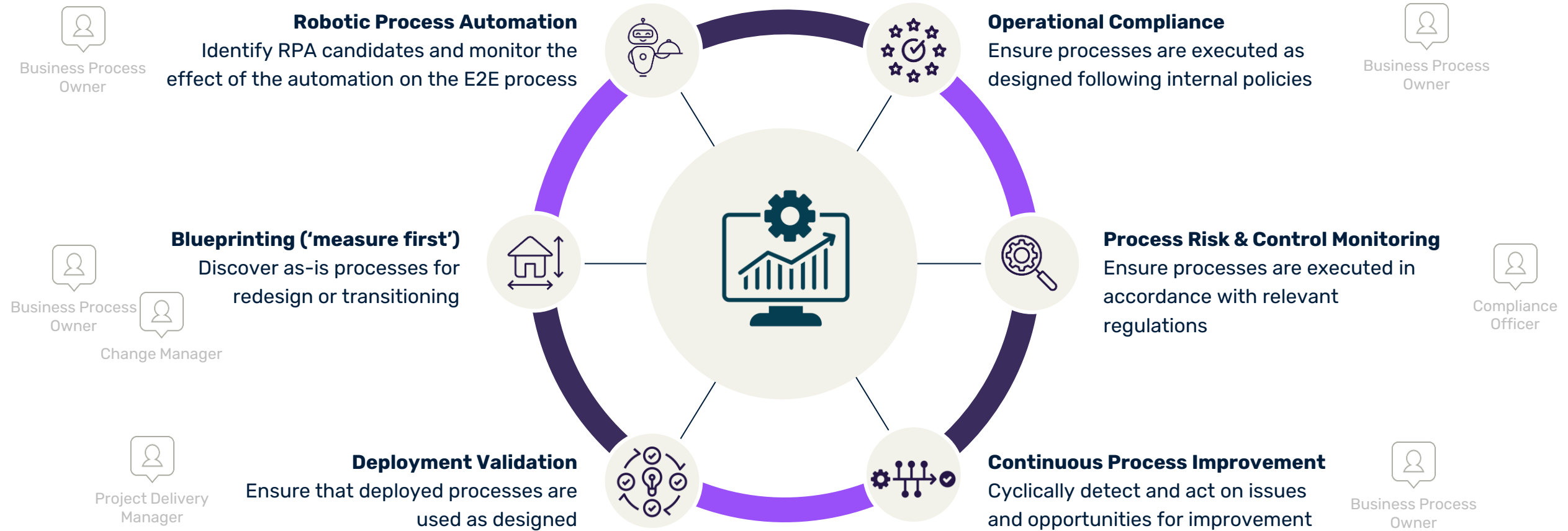
ARIS Process Mining SaaS Technical Setup

High-level data connectivity architecture.

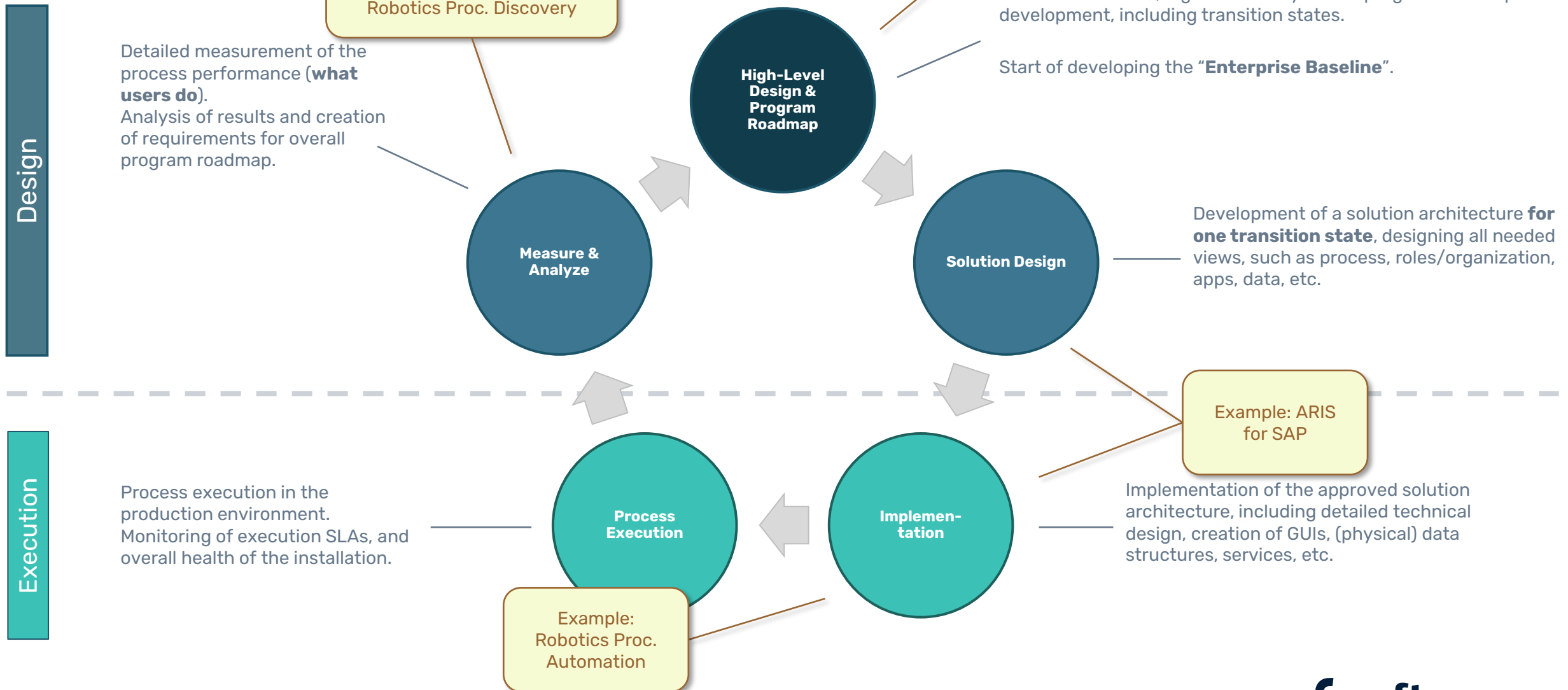


High-Level Use Cases

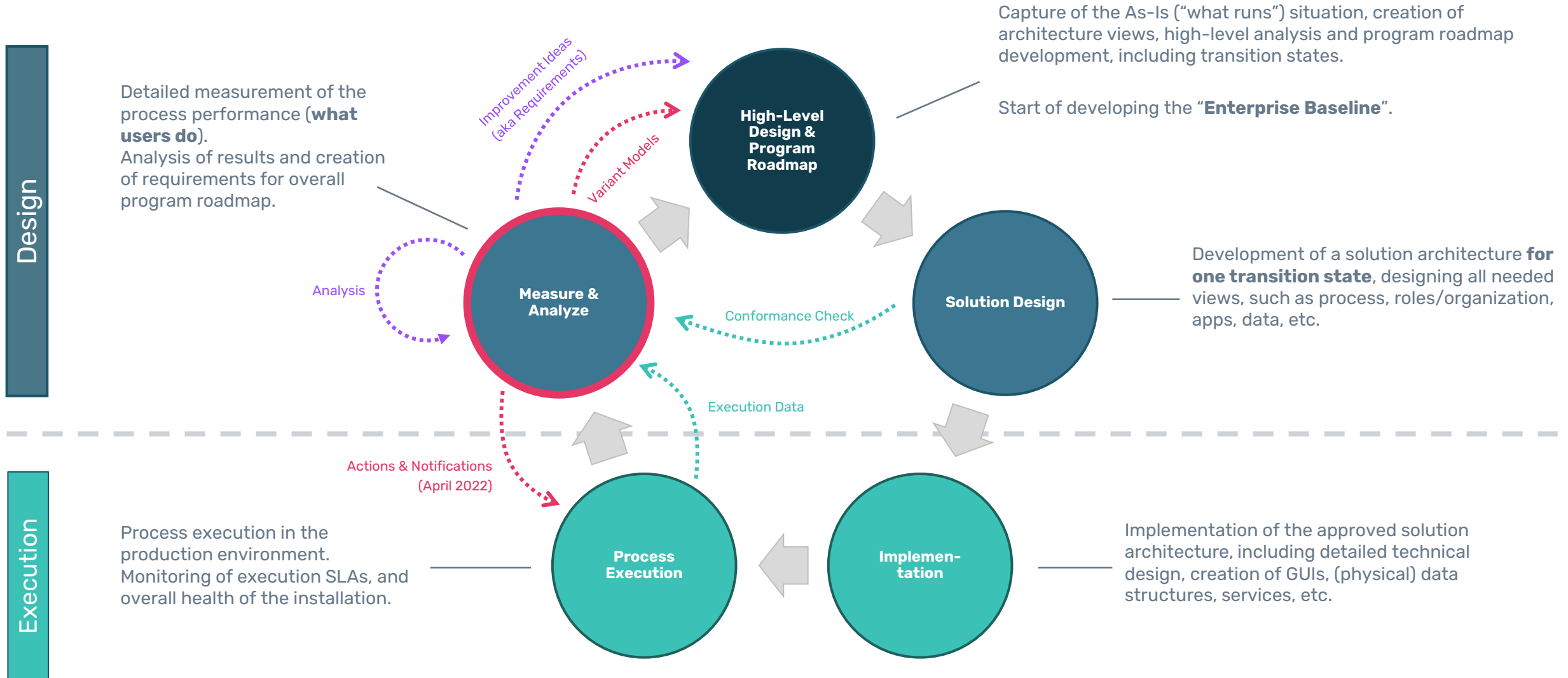
Process Mining covers these main use cases, serving different audiences.



Process Lifecycle



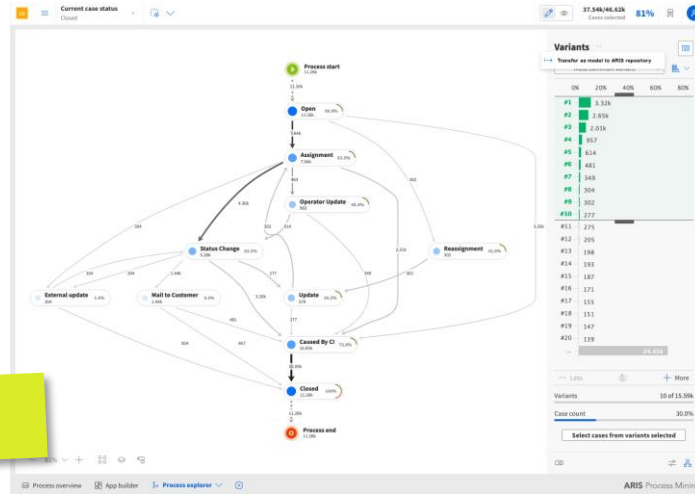
Process Lifecycle



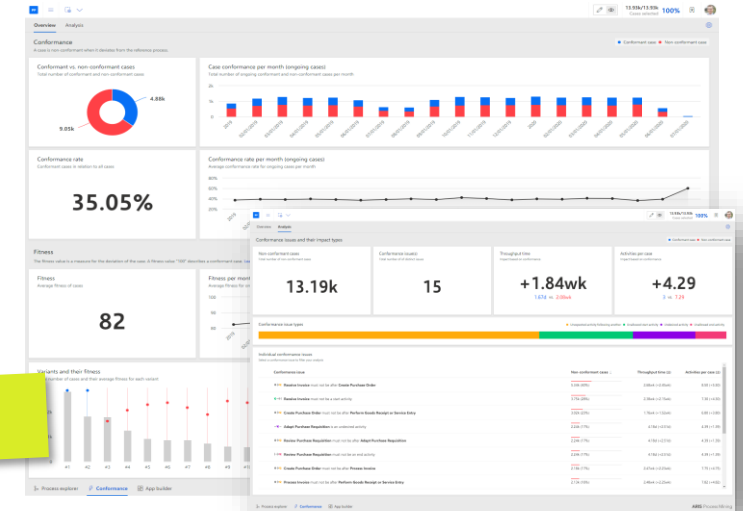
Process Mining Analysis

Various apps dashboards (OOB and custom) meet the analysis needs of clients.

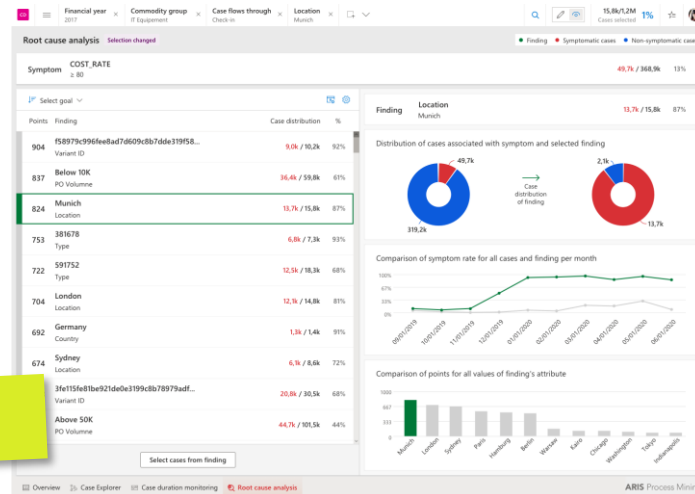
Process Explorer and variant analysis



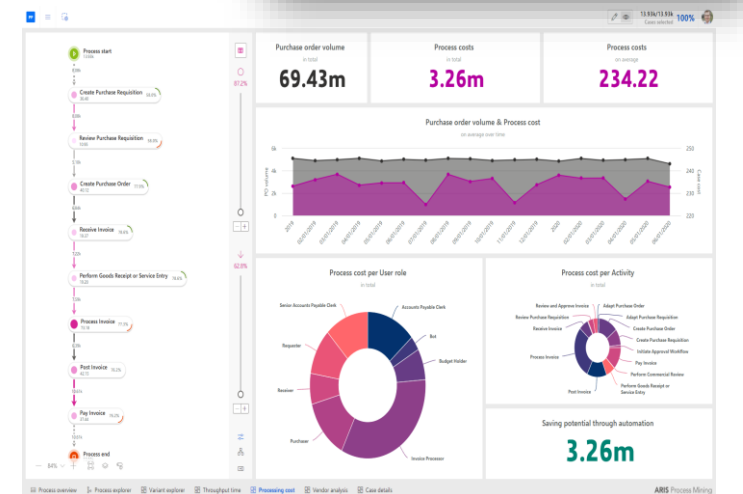
Conformance analysis



Root-Cause analysis

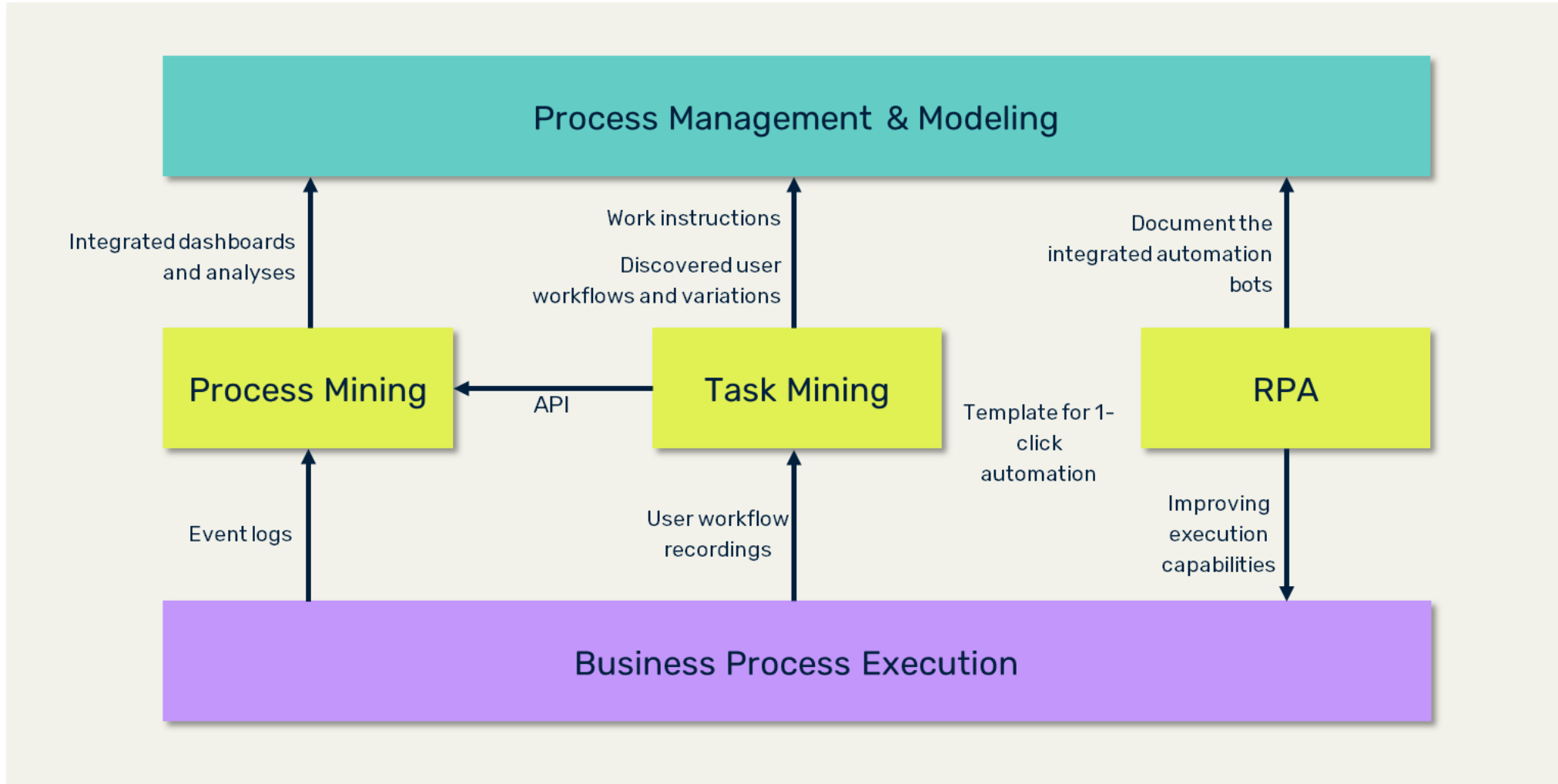


Custom analysis



Process Mining, RPD & RPA

Mining technologies can be integrated to accelerate Robotics Process Automation.



Example process for today

The process for today's demo is a Procure to Pay process.

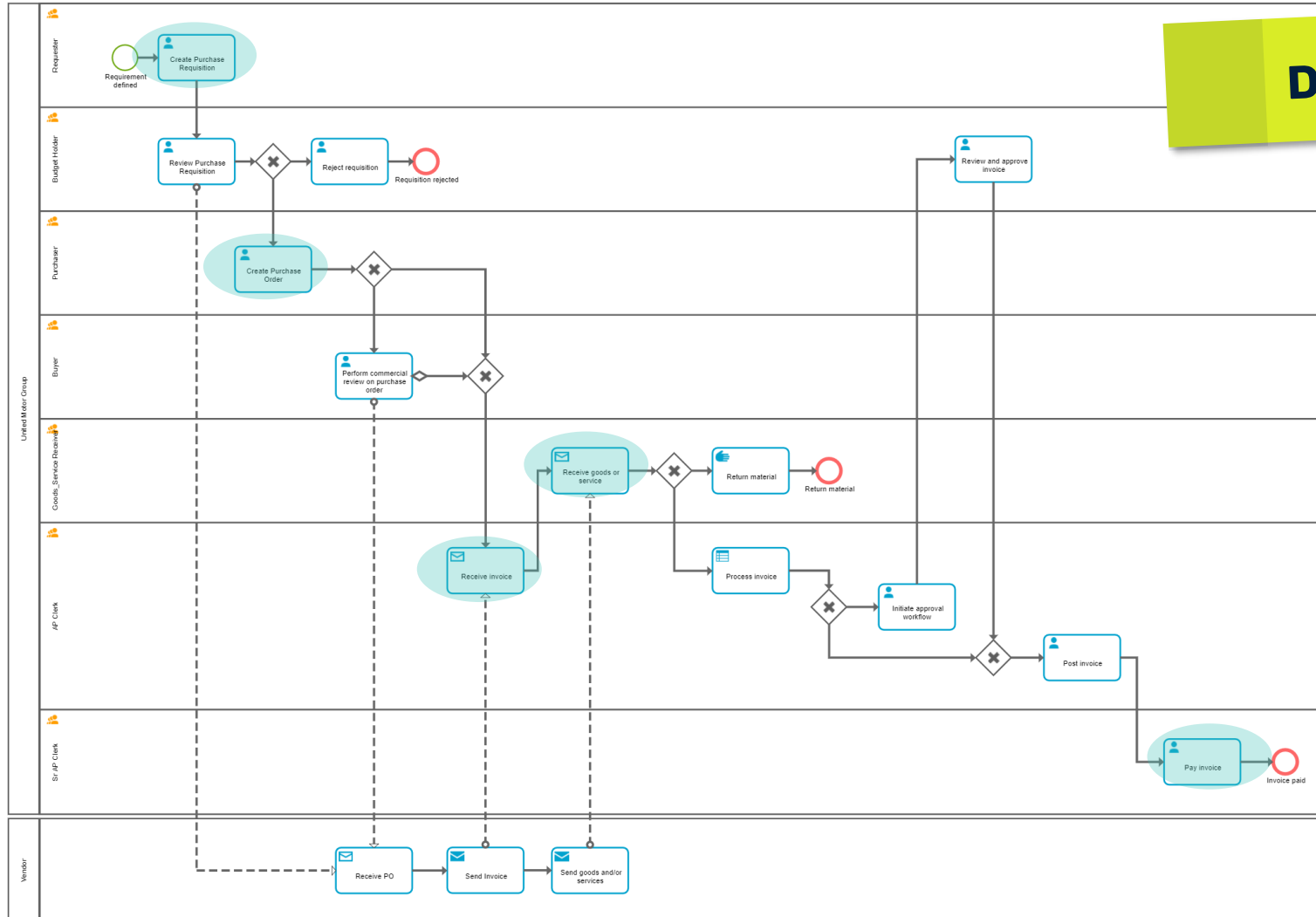
Purchase Requisition

Purchase Order

Goods Receipt

Receive Invoice

Pay Invoice



Demo

Where to Learn More

The What's Your Baseline podcast is available on all major podcast directories.

The screenshot shows the website for 'What's Your Baseline'. The header includes the logo and navigation links: HOME, PODCAST, ABOUT, CATEGORIES, CONTACT, and a SUBSCRIBE button. The main content area features a large green box with the text 'What's Your Baseline Podcast' and 'Enterprise Architecture and Business Process Management Demystified'. Below this, there is a section titled 'REMOVING THE BARRIERS TO THE ARCHITECTURE DISCIPLINE' with a paragraph of text and a list of topics. A yellow callout box at the bottom right of the screenshot contains the URL 'whatsyourbaseline.com/podcast'.

What's Your Baseline Podcast
Enterprise Architecture and Business Process Management Demystified

REMOVING THE BARRIERS TO THE ARCHITECTURE DISCIPLINE

Have you ever been confused by jargon-y architect language? Things like "TOGAF", "BPMN", and "UML" – what do they mean, and why do they matter? Or suffered through a system implementation that had a lot of upfront planning, but ended up with scope creep?

Welcome to the What's Your Baseline podcast, where we explore these topics and more. This podcast is about Enterprise Architecture and Business Process Management, and how you can set up your practice to get the most out of it.

It is for:

- newbies who just get started with these topics,
- organizations who want to improve their EA/BPM groups and the value they bring to the business,
- as well as practitioners who want to get a different perspective and learn from others.

So what can you expect here? Each episode, we'll be diving into a topic that is interesting, relevant, and why it's interesting and why you should care. We'll also share stories from the road – how to implement best practices, and their value.

Join us on this bi-weekly journey with the **What's Your Baseline Podcast** and companion blog.

whatsyourbaseline.com/podcast

A collage of seven podcast episode highlights, each with a quote and a link to the episode. The quotes are from Roland Woldt, Jose Pires, and Mike. The links are to various episodes on the 'whatsyourbaseline.com' website.

- Episode 1:** Hopefully in the future, there is no split between BPM and EA - I think it's all about architectures, designing and defining how a future state will look forward. whatsyourbaseline.com/episode1
- Episode 2:** Why bring existing information in? Because everybody is busy. You want to make the effort for the individual as little as possible so that they can focus on their current job, while bringing insights from previous projects and large experts. whatsyourbaseline.com/episode2
- Episode 3:** The four main phases of your architecture tool implementation are: Strategy, Technology, Governance, and Import of existing content. whatsyourbaseline.com/episode3
- Episode 4:** The big goal: Timely release, operation and maintenance of quality assured products and services in a cost effective way. whatsyourbaseline.com/episode4
- Episode 5:** You have to be careful with Pay-to-Play conferences - those are just a money-making machine. And that's the revenue model that many conferences use. whatsyourbaseline.com/episode5
- Episode 6:** In my opinion, Process Mining becomes the speedometer of Process Management, where you have the control to see how we are doing in executing our processes. whatsyourbaseline.com/episode6
- Episode 7:** whatsyourbaseline.com/episode7
- Episode 10:** whatsyourbaseline.com/episode10



and many more...

